

# Mapping the distribution and habitat use of Atlantic cod spawning aggregations on Cox's ledge to assess potential impacts of offshore wind energy development

Presenting Authors:

Rebecca Van Hoeck & Alison Frey

Principal Investigators: Sofie Van Parijs, Steve Cadrin, Tim Rowell, Mark Baumgartner, Greg DeCelles, Micah Dean, Brian Hoffman, Matt Camisa, Chris McGuire, Doug Zemeckis, Susan Tuxbury



UNC  
COLLEGE OF  
ARTS & SCIENCES



School for Marine Science & Technology  
UMass Dartmouth



NOAA  
FISHERIES

Northeast Fisheries Science Center



The Nature  
Conservancy

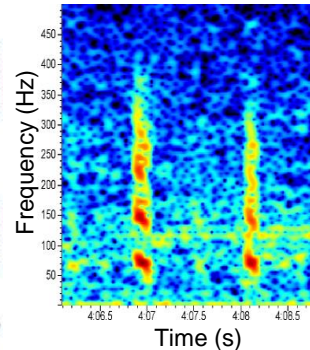
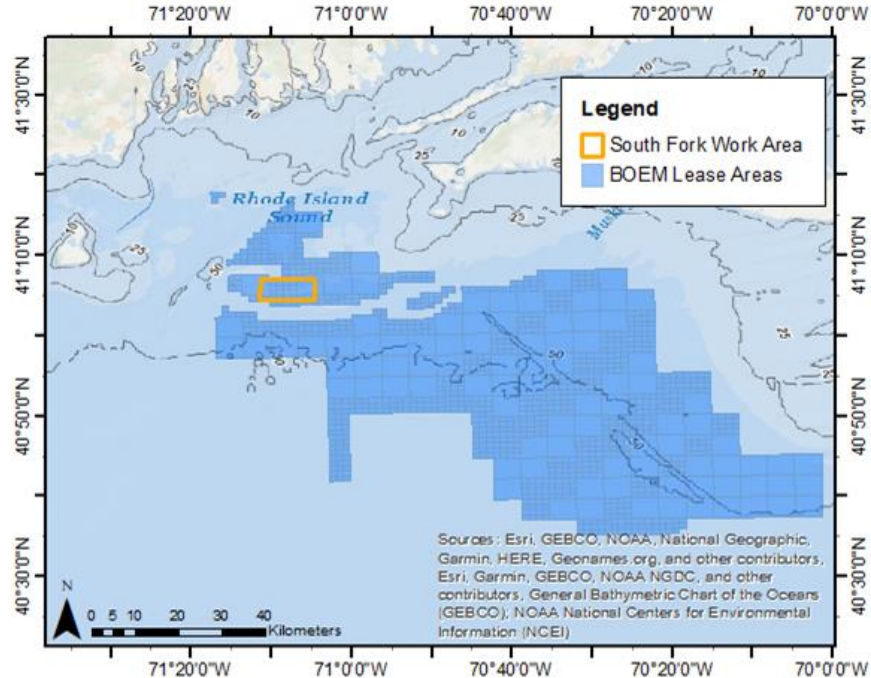
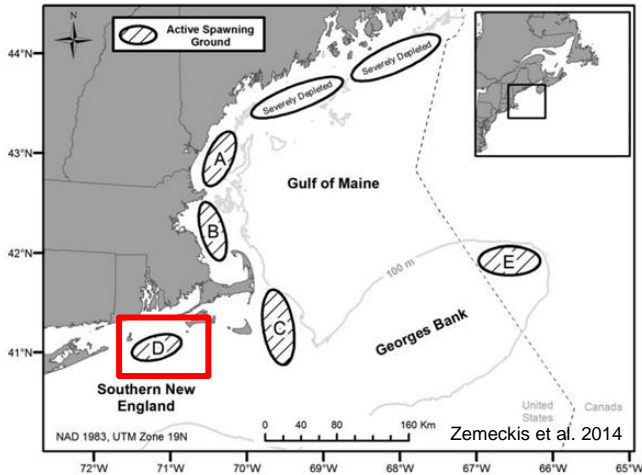


RUTGERS  
New Jersey Agricultural  
Experiment Station

BOEM  
BUREAU OF OCEAN ENERGY MANAGEMENT

BOEM Award #M19PG00015

# Atlantic Cod (*Gadus morhua*)



## Research Questions:

1. What are the spatiotemporal spawning dynamics of cod in Southern New England?
2. Does cod spawning overlap with planned offshore wind energy?

# Methodology

## Autonomous glider surveys:

- Continuous recording & telemetry receiver



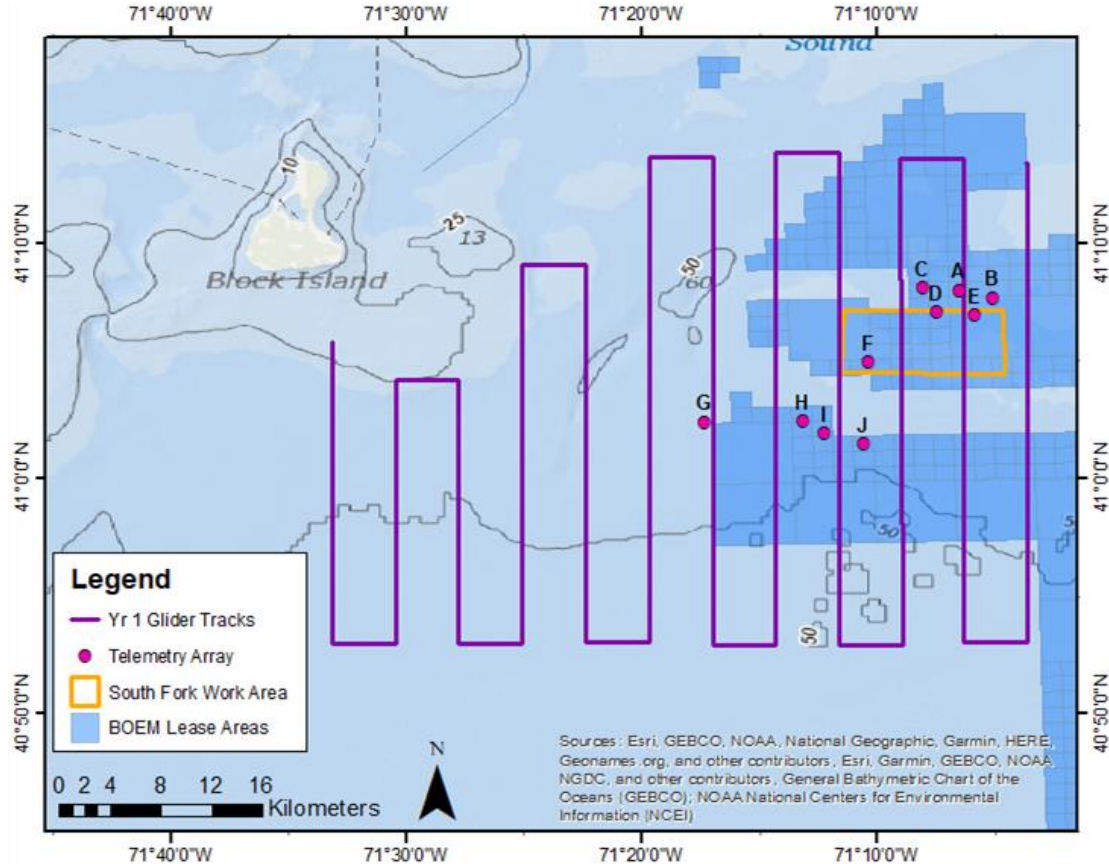
## Acoustic Telemetry:

- 10 receiver array focused on South Fork



## Biological Sampling:

- Length, sex, maturity status, otoliths, and genetic samples



# Results & Next Steps

## Year 1 Preliminary Results:

- Spawning spans Nov - March
- High residence on Cox's Ledge, with some regional spawning

## Next Steps:

- Two more years of sampling
- Interactions with offshore wind?
- Spatiotemporal spawning dynamics

